

# SH Silk House

— BEAUTIFUL LIVING SPACES —



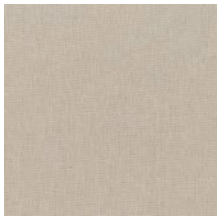
**PALLADIUM**  
CURTAINING DIGITAL ASSET

SH

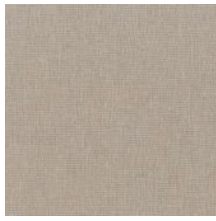


PRESTONY SULPHER

## PRESTONY



**Almond**  
GDD015ACTM



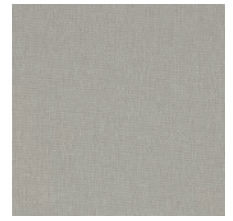
**Husk**  
GDD015BCTM



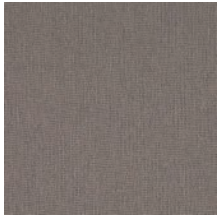
**Hessian**  
GDD015CCTM



**Coconut**  
GDD015DCTM



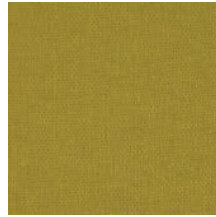
**Stone**  
GDD015ECTM



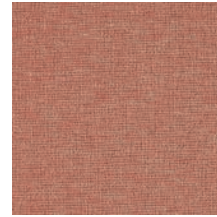
**Shale**  
GDD015FCTM



**Meringue**  
GDD015GCTM



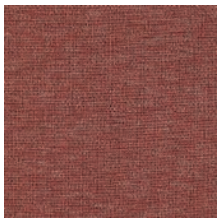
**Sulphur**  
GDD015HCTM



**Satsuma**  
GDD015ICTM



**Lavender**  
GDD015JCTM



**Merlot**  
GDD015KCTM



**Sea Foam**  
GDD015LCTM



**Pacific**  
GDD015MCTM



**Azul**  
GDD015NCTM



**Mascara**  
GDD015OCTM

**Composition :** 70% Polyester Filament, 15% Polyester Spun, 15% Cotton Spun

**Texture :** Natural-Matt Finish

**Weave :** Plain Weave

**Width :** 300cm Wide

**Application :** Accessories, Curtaining

### Washing Instructions

Cold Machine Wash, Do Not Bleach, Do Not Iron, Dry Clean – Any Solvent – Except Trichloroethylene, Tumble Dry Low

A pair of dark grey, pleated curtains hangs from the top of the frame, filling most of the background. The curtains have a subtle texture and are slightly gathered at the top. The lighting is soft, creating gentle shadows in the folds.

SH

— BEAUTIFUL LIVING SPACES —

**KRAMERVILLE SHOWROOM**

2 Brian Street  
Kramerville, Sandton, 2148  
**010 494 7966**

[info@silkhouse.co.za](mailto:info@silkhouse.co.za)  
[www.silkhouse.co.za](http://www.silkhouse.co.za)