

SH Silk House

— BEAUTIFUL LIVING SPACES —

STUDIO
UPHOLSTERY DIGITAL ASSET

SH



FJORD ANTHRACITE - Pg 4

CANDY	Pg 4
FJORD	Pg 4
JORDON	Pg 5
MOJO	Pg 5

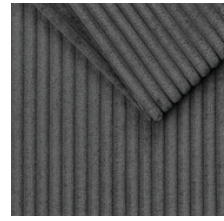
CANDY



Pearl
ISC003ACTM



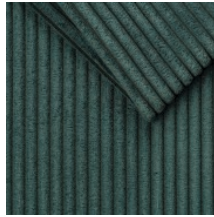
Hazelnut
ISC003BCTM



Grey
ISC003CCTM



Bubblemum
ISC003DCTM



Azure
ISC003ECTM



Sorbet
ISC003FCTM

Composition : 92% Polyester, 8% Nylon
Rub Count : 100 000
Texture : Natural Matt Finish
Weave : Knit, Plain Weave
Width : 142cm Wide
Application : Accessories, Upholstery

Application & Care

Do Not Bleach, Do Not Iron, Dry Clean – Any Solvent – Except Trichloroethylene, Tumble Dry Low Heat, Warm Machine Wash

FJORD



Beige
ISC004ACTM



Antelope
ISC004BCTM



Stone
ISC004CCTM



Anthracite
ISC004DCTM



Graphite
ISC004ECTM



Olive
ISC004FCTM

Composition : 100% Polyester
Rub Count : 100 000
Texture : Natural Matt Finish
Weave : Plain Weave
Width : 145cm Wide
Application : Accessories, Upholstery

Application & Care

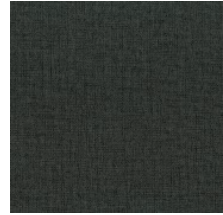
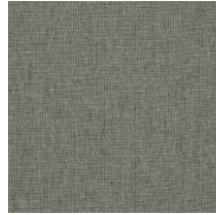
Do Not Bleach, Dry Clean – Any Solvent – Except Trichloroethylene, Low Iron, Tumble Dry Low Heat, Warm Machine Wash

JORDAN



Stone
ITP009ACTM

Alabaster
ITP009BCTM



Mushroom
ITP009CCTM

Cloud
ITP009ECTM

Storm
ITP009GCTM

Composition : 100% Polyester
Rub Count : 65 000
Texture : Natural Matt Finish
Weave : Plain Weave
Width : 137cm Wide
Application : Accessories, Upholstery

Application & Care

Do Not Bleach, Do Not Iron, Do Not Wash, Dry Clean – Any Solvent – Except Trichloroethylene – Delicate

MOJO



Marula
IAV001ACTM

Dove
IAV001BCTM

Seal
IAV001CCTM

Composition : 89.5% Polyester, 10.5% Nylon
Rub Count : > 50 000
Texture : Natural Matt Finish
Weave : Knit, Plain Weave
Width : 142cm Wide
Application : Accessories, Upholstery

Application & Care

Do Not Bleach, Do Not Iron, Dry Clean – Any Solvent – Except Trichloroethylene, Warm Machine Wash



SH



CANDY BUBBLEGUM - Pg 4



SH

— BEAUTIFUL LIVING SPACES —

KRAMERVILLE SHOWROOM

2 Brian Street
Kramerville, Sandton, 2148
010 494 7966

info@silkhouse.co.za
www.silkhouse.co.za